



A New Beginning

For our 5th annual Whole Home, we went back to Atlanta to renovate and expand a 1950's ranch that had already lived several lives. Our guess? This one will stick.



THANKS TO OUR PROJECT SPONSORS

ANN SACKS, ARCHITECTURAL GRILLE, ARTE, CAESARSTONE, CIRCA LIGHTING, CRATE & BARREL, ELKAY, FABRICUT, FARROW & BALL, FIBREWORKS, FRANÇOIS & CO., FRONTGATE, GROTHOUSE, LEE INDUSTRIES, LG STUDIO, MINTED, MORRIS & CO., PELLA, PHILLIP JEFFRIES, REGIONS BANK, ROCKY MOUNTAIN HARDWARE, SANDERSON, SCHLAGE, SERENA & LILY, SIGNATURE KITCHEN SUITE, STEARNS & FOSTER, TRANE, WAYFAIR, WELLNESS WITHIN YOUR WALLS

builder Ladisic Fine Homes / *architect* Pak Heydt & Associates
producer and writer Carisha Swanson / *stylist* Robert Rufino / *photographer* Robert Peterson



WE WANTED TO *BUILD* A HOUSE.

Like so many Americans itching for change in 2022, we faced reality: Sure, we could start, but when would we finish—before this holiday season or next? So rather than take that bet, we decided to tackle a renovation project (the first time ever!) for our **5th Annual Whole Home**. The target: a 1950's ranch-style house situated on a tree-lined street in the Chastain Park area of the Buckhead neighborhood in Atlanta.

We convinced Michael Ladisic of Ladisic Fine Homes to let us in, along

with 11 design teams from around the country, to reimagine the property. The midcentury house was in need of a serious upgrade, and the build team focused on one thing: How should a family home *really* function today? Architect Yong Pak of Pak Heydt & Associates laid plans for a modern Tudor design with whole wings for working, dreaming, hosting, and, of course, being a teenager.

What we know now is that it takes *way more* than a village to renovate 11,000 square feet of space (including

5,000 square feet of outdoor space) in under six months. In fact, it took four project managers, about a hundred skilled tradespeople (including carpenters, plumbers, roof layers, tile and wallpaper installers, and the world's fastest landscapers), as well as Ladisic's get-it-done wife, Lisa, to bring the vision to life. **Having the right team makes all the difference.** Perhaps the constant bribing with bacon-stuffed biscuits from a favorite local eatery helped a little too.

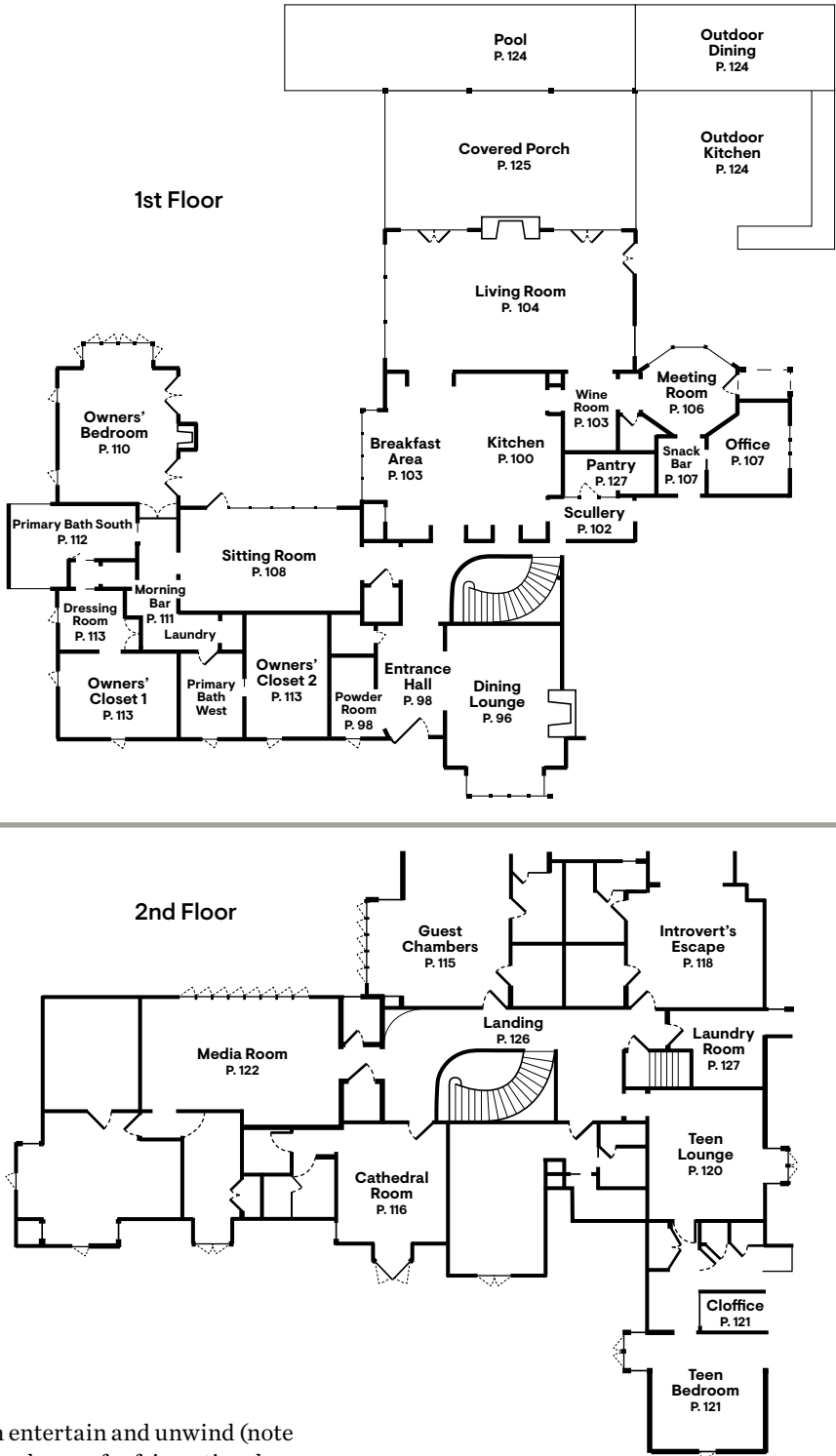
So began months of nonstop drill-

ing, rooftop hammering, paint-can popping, and a cacophony of people hollering over all the commotion. The police were called only once. And now we're done.

The home is an astonishingly beautiful, surprisingly intimate, light-filled home for a busy family and their guests. Maybe more impressive is that the 11 design teams, who did not collaborate one bit during the conceptual phase, landed on so many of the same themes. The house has multiple lounges, serene bedrooms, and rooms

to both entertain and unwind (note the abundance of refrigeration drawers and pedestal tables).

Not everyone will embark on a renovation of this scale. But the rooms in this house are packed with ideas that are yours for the taking. Maybe this is the year you add an outdoor kitchen (thanks to instant modular cabinets) or level up a guest room by incorporating hotel-style amenities. There's a lesson here: You don't have to change *where* you live to change *how* you live. ■



EXTERIOR
The facade (previous page) was updated with architectural **windows** from [Pella](#) and **paint** in Mole's Breath and Purbeck Stone by [Farrow & Ball](#). A new pivoting steel door with a [Schlage](#) **smart lock** grants guests access from afar.

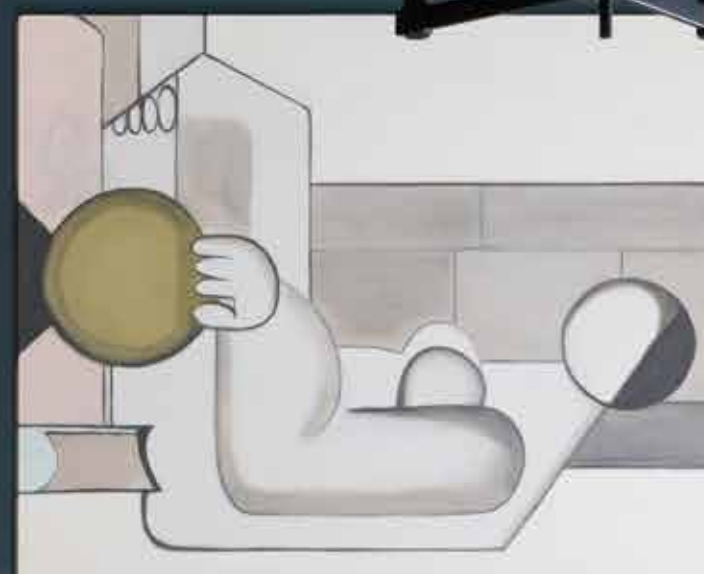
➤ **POOLSIDE LOUNGE**
A new tiled archway framing the outdoor fireplace is the place to be après-swim. (Yes, you can relax in the hot tub and still mingle with other guests.) **Furniture** and **accessories:** [Frontgate](#). **Fireplace:** [François & Co.](#) **Fireplace tile:** [Ann Sacks](#).

DINING LOUNGE

—
by
SAVAGE INTERIOR
DESIGN

“Our goal was to make a space where you’d want to spend time,” says designer Jonathan Savage of what was formerly a study. Saturating the walls and ceiling in a rich gray-blue, he divided the 230-square-foot space into a cozy den on one end and a zone for hosting dinner parties or game nights on the other. A tonal wallcovering set into sections of molding and a wool chevron rug give it vibrance and texture, while the off-center fireplace, unmoved but updated with a [François & Co. mantel](#), lures in guests. “It’s an informal entertaining space that keeps everyone in the front of the house,” says Savage.

Rug: [Fibreworks](#). **Upholstery:** [Lee Industries](#); swivel chair, sofa in [S. Harris fabric](#). **Paint:** Inchyra Blue, [Farrow & Ball](#). **Lighting:** [Circa Lighting](#). **Wallcovering:** [Phillip Jeffries](#). **Accent chair:** [Ekstrem](#). **Art:** [George Williams](#) (above fireplace). **Bar cabinet:** [Baker](#).





POWDER ROOM

A custom **vanity** in Coastal Grey by **Caesarstone** pairs perfectly with a **vinyl wall-covering** from **Arte** and a **mosaic floor** by **Ann Sacks** in Calacatta Zebrino.

ENTRANCE HALL

Savage immersed the foyer in Preference Red by **Farrow & Ball**, creating a dramatic entry. The hallway connects the open dining lounge and powder room to the rest of the home. **Chair:** antique, in **S. Harris fabric**. **Art:** Jennifer Gibbs (over chair), Joseph Guay (in hallway).

STORAGE CORNER

Opposite the table, a custom **Grothouse sideboard** holds everything from tableware to board games. **Wallcovering:** **Phillip Jeffries**.



DINING NOOK

A new box **window** from **Pella** frames the perfect setup for candlelit dinners: a fluted **pedestal table** by **Grothouse** is paired with skirted armchairs on casters. **Chairs:** **Lee Industries** in **S. Harris fabric**. **Drapery:** **The Vale London**. **Candleholders:** **Serena & Lily**.

KITCHEN

by WHITTNEY PARKINSON
DESIGN

A harmonious cooking environment is as much about what you see when you look up as it is about the task at hand. In converting a formerly supersized dining room, designer Whittney Parkinson let the floor-to-ceiling windows lead the way. “I didn’t want to obstruct that view, instead I wanted to embrace it. All of the elements in this kitchen were based on aligning with that window,” she says. Mirrored glass tile above the backsplash reflects back the daylight, not people. To maximize space and storage, she created a refrigeration wall on the left and replicated the look with closed storage on the right. Two seating areas, at the island and breakfast table, provide plenty of room for a large family to spread out, while an attached wine niche, scullery, and pantry make this space entertaining ready.

Appliances: [Signature Kitchen Suite](#). **Lighting:** [Circa Lighting](#). **Tile:** [Ann Sacks](#). **Paint:** De Nimes (trim), Light Blue (panels), and Blanc de Chine (walls), all [Farrow & Ball](#). **Countersplash:** [Caesarstone](#). **Small appliances** and **accessories:** [Wayfair](#). **Fixtures:** [Elkay](#). **Stools:** [Serena & Lily](#). **Windows:** [Pella](#). **Cabinetry:** [Omega Cabinetry](#). **Island:** [True Woodworks](#).





<

SCULLERY

This windowless pass-through offers a secondary prep space for gatherings. To brighten it up, Parkinson used the same mirrored tile that's above the sink in the kitchen, [Caesarstone](#) for the **backsplash**, and a [Grothouse](#) walnut **countertop**. A built-in **microwave**, **dishwasher**, and two undercounter **refrigeration drawers** from [Signature Kitchen Suite](#) make it nearly as functional as the primary kitchen.

Wallcovering:

[Phillip Jeffries](#), **Paint:** Hopper Head, [Farrow & Ball](#), **Plates:**

[Williams Sonoma](#) x [Morris & Co.](#), **Fabric:** [Morris & Co.](#), **Lighting:** [Circa Lighting](#).



^

FRIDGE WALL

The main prep area houses a 48" [Signature Kitchen Suite](#) **refrigerator** with four drawers, including one that makes Craft Ice and another that can be set to five different temperature settings.

^

WINE ROOM

Inspired by an original May Morris design, this [Morris & Co.](#) **wallpaper** showcases birds and flower heads in a fruit tree, adding whimsy to a very adult space. Two [Signature Kitchen Suite](#) **wine columns** complete with two drawers to store cocktail plates and napkins, offset the [François & Co.](#) **brass serving area**. **Paint:** Hague Blue, [Farrow & Ball](#).

<

BREAKFAST AREA

An antique pedestal table has already stood the test of time, primed for a busy family. **Skirted chairs** from [Lee Industries](#) round out the casual corner.



ALCOVE

A little nook was primed for a built-in settee. Feldman designed the seat in a [William Morris floral velvet](#) with a custom [Fabricut trim](#) and flanked it with [Circa Lighting sconces](#) and a painted Moroccan table. “I love this little moment. It kind of makes no sense but looks good together,” she says.

THRUWAY

This oversize, lengthy room has six openings to adjoining spaces, so Feldman floated most of the furniture in the middle for natural conversation and easy flow if you’re just passing through. **Sofa:** [Lee Industries](#).



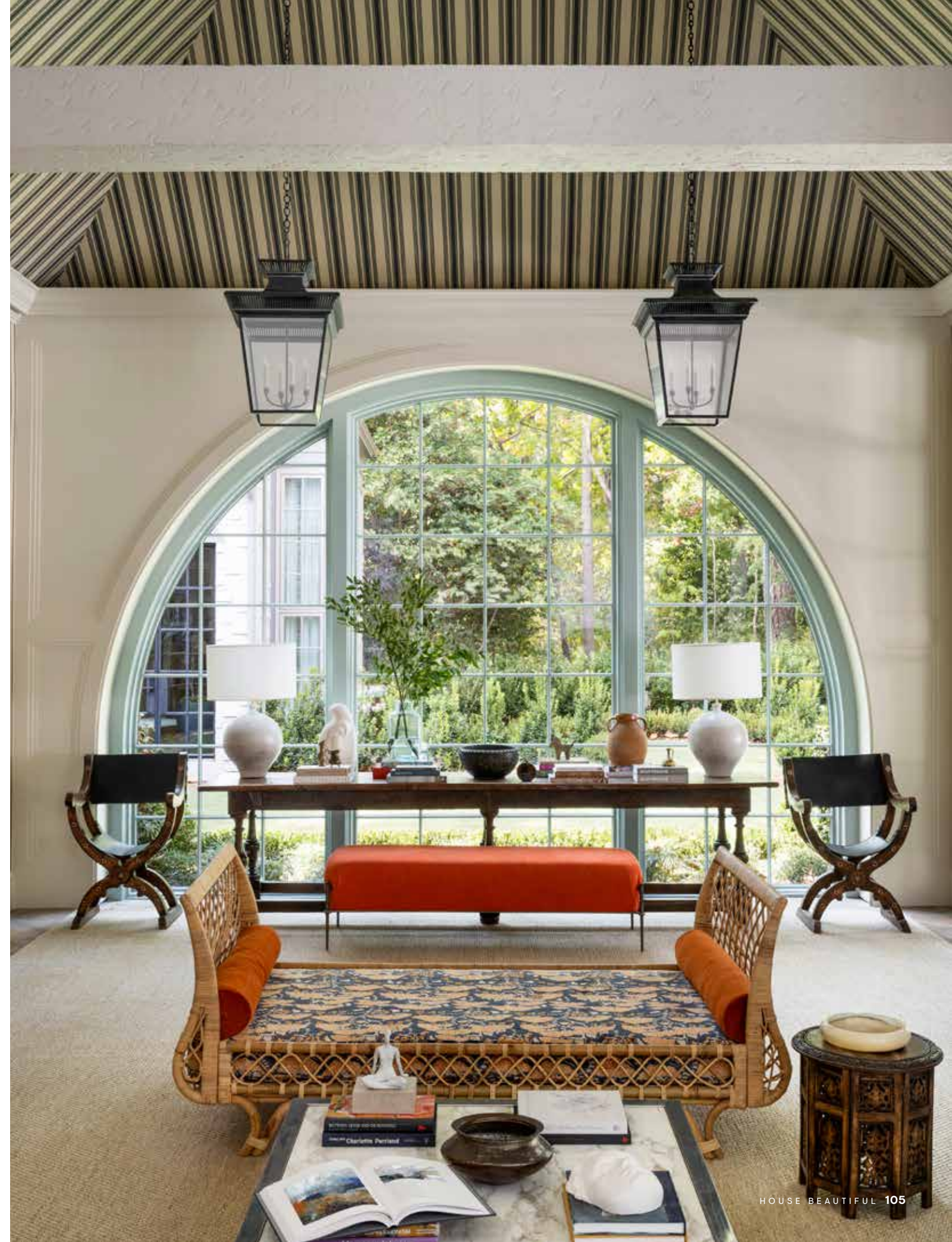
LIVING ROOM

by ZOË FELDMAN DESIGN

Bigger doesn’t always mean brighter. “When I first walked into this room, I was like, ‘Wow, this is really pretty,’ followed by, ‘Oh, we’re going to need to fix that,’” designer Zoë Feldman recalls. She loved the pitched ceilings and light streaming in, but the dark beams, floor-to-ceiling stone fireplace, and dated Gothic fixtures were all making the space feel dark. Feldman’s goal was to make the whole room into a combination “living room, garden room, and sunroom.”

The first step was replacing energy *inefficient* windows with a stunning arch **window** from [Pella](#) and glass steel doors. Rather than leaving them black, Feldman painted them a subtle green-blue and gave the walls and beams a few coats of creamy white. Overhead, the ceiling is tented with a variegated black-and-white-striped wallpaper, and the fireplace is now modernized with a fresh layer of plaster. The new corrugated stone mantel is a focal point. Says Feldman: “It feels like a jewel box even though it’s a large space.”

Rug: [Fibreworks](#). **Paint:** Lime White (walls), Green Blue (windows), [Farrow & Ball](#). **Wallpaper:** custom, [Farrow & Ball](#). **Lighting:** [Circa Lighting](#). **Daybed:** [Serena & Lily](#), in [Sanderson fabric](#). **Mantel:** [François & Co](#). **Bench:** [Lee Industries](#).





WFH ZONE

by DRESSING ROOMS
INTERIORS STUDIO

Now that working from home is a lifestyle rather than a fallback plan, it takes place all over the house. Designer Ariene Bethea imagined how a person would move through their workday at home before settling on a three-part suite. "They'd have coffee, go into the office with their teammate, and then take calls or present to a client in the conference room," the designer says. She connected these underutilized spaces, turning a side room into the office, a hallway into a serve-yourself snack bar, and a garden room into a flex meeting room with a view. "After hours, it can work for homework and fun family nights," she says. Bethea credits her mother for her love of art, having grown up with gallery walls before they were "a thing." She unified all three spaces with an eclectic mix of new and vintage art, a deep eggplant color, and an abstract wallcovering on the ceiling, saying, "No one wants a boring office!"

Lighting: Circa Lighting. **Hardware:** Rocky Mountain Hardware. **Countertop:** Caesarstone. **Paint:** Brinjal, Farrow & Ball. **Drapery:** S. Harris. **Chairs:** vintage, in Fabricut fabric. **Table:** Serena & Lily. **Ceiling wallcovering:** Phillip Jeffries.



^ SNACK BAR

Located just off the conference room (opposite page), an unused hallway is now stocked with coffee supplies for daytime meetings and cocktail accoutrements for celebratory happy hours. **Countersplash:** Caesarstone. **Brass:** Architectural Grille.

< OFFICE

Bethea designed the office to have plenty of workspace, with a wraparound desk for two. An abundance of closed storage houses all the practical (but less pretty) components of office work, while open shelving above shows off a rich collection of objets and books. **Chair:** Lee Industries. **Art:** James Derit, Minted.

SITTING ROOM

by MARK WILLIAMS DESIGN

What if you could just linger in your own private wing until you wanted to engage? Such was the goal in creating a formal owners' suite, a new 1,500-square-foot addition that starts with a sitting room, all made welcoming and luxurious by partners Mark Williams and Niki Papadopoulos. **"When you enter the owners' space, you feel respite,"** Papadopoulos says. "We wanted this to be where you start your day, with coffee from the morning bar, and where you end your day with a glass of wine." To keep the sitting room feeling relaxed, they used warm textures and colors: oak planks, natural limestone, and a rich green wall color that reflects the courtyard outside. A 10' stone mantel by [Francois & Co.](#) adds a dramatic point of interest opposite accordion doors that open fully to the garden.

Furniture: [Lee Industries](#). **Coffee table:** [Architectural Grille](#). **Paint:** [Bancha](#), [Farrow & Ball](#). **Thermostat:** [Trane](#). **Drapery:** [Sanderson](#). **Side table:** [Serena & Lily](#).





OWNERS' SUITE

by MARK WILLIAMS DESIGN

Thanks to architect Yong Pak's 14-foot-tall vaulted ceilings, Williams and Papadopoulos were inspired to impart a romantic sensibility in the bedroom. Overlapping LED fixtures that look like crystal necklaces are draped from the ceiling. Drapery panels in a [Sanderson fabric](#) embroidered with leaves and acorns cover the entire wall behind the custom bed and the reading niche. "One thing Atlanta is known for is our tree canopy," Williams says. "**We loved the idea of bringing that natural vibe into this house.**" All of this ornamentation adds up to a sort of luxe cocoon you'd never want to leave: "I think we created a room that feels cozy, intimate, and calm," Williams says.

Bed: [Lee Industries](#). **Bedside tables:** [Grothouse](#) with [Architectural Grille](#) inserts. **Mattress:** [Stearns & Foster](#). **Lighting:** [Circa Lighting](#).



FIREPLACE: TOMAS ESPINOZA.



READING NOOK

A light-filled niche in the bedroom is the perfect spot for a private catch-up. **Chairs:** [Serena & Lily](#), in [Sanderson fabric](#). **Windows:** [Pella](#). **Wallpaper, drapery, and bedding:** [Sanderson](#).

GALLERY

Art lines the hallway connecting the owners' sitting room, bedroom, closets, and bathrooms. A "morning bar" with a coffee station and **dual refrigeration drawers** from [Signature Kitchen Suite](#) is tucked into one wall.

FIREPLACE

Across from the bed, a [François & Co.](#) brass stepped **mantel** picks up architectural forms repeated throughout the home.



PRIMARY BATH SOUTH
Natural light invigorates a cloud-covered wallpaper from Sanderson. Fluting on the tub in the wet room is repeated on the vanity and sitting room built-ins. Tile: Ann Sacks.



OWNERS' CLOSETS

Adams designed two closets for the future homeowners to fight over. One has an integrated LG Studio Styler to gently refresh clothing, while the other has a glass island top to showcase jewelry.



COSMETICS COUNTER

Between the bathrooms and closets sits a proper dressing room, with a three-way mirror (including a TV mirror) and a makeup table with a flip-top. Chair: Lee Industries. Knobs: Rocky Mountain Hardware.

DRESSING ROOMS

by LA CLOSET DESIGN

Do you need room for 50 pairs of shoes or hanging space for all those maxi dresses? These are typically the kinds of questions a closet designer asks (before they come see the space themselves). But when designer Lisa Adams was asked to design closets that would make *any* homeowner happy, she had to think universally. “We wanted something more exciting than the classic white closet,” she says. With this in mind, Adams made room for *all the things*: vanity tables, islands to hold intimate apparel, LED-lit shelves for accessories, and plenty of wardrobe space.

Lighting: Circa Lighting. Pillows: Serena & Lily. Shade: Sanderson. Island tops: Caesarstone.





GUEST SHOWER

In the bathroom, Calacatta tiles are matched with tile trim, creating a luxe paneled effect in this modern European-inspired shower. **Tile:** [Ann Sacks](#).



RELAXATION ZONE

Talk about amenities: A glossy wall of custom cabinetry is offset by **brass inlays** from [Architectural Grille](#) and topped with a [Grothouse](#) **wood desktop**. Smartly hidden features include a **microwave** from [Signature Kitchen Suite](#) and their **dual undercounter refrigerator drawers**—stocked with mini-bar-level refreshments—plus an [LG](#) **OLED TV** for marathon movie nights. **Windows:** [Pella](#). **Chandelier:** [Circa Lighting](#). **Chairs:** antique, in [Fabricut](#) **fabric** and [Stroheim](#) **trim**. **Sofa:** [Lee Industries](#), in [Vervain](#) **fabric**.

PRIVATE QUARTERS

Just off the sitting area, there's a full walk-in closet and an en suite bath, making it the ultimate little getaway for those who want to stay awhile. **Brass inlay:** [Architectural Grille](#).



GUEST CHAMBERS

by BRYNN OLSON
DESIGN GROUP

Who doesn't want to feel like they're staying at a luxury hotel—for free? This is exactly what designer Brynn Olson had in mind creating a suite for overnight guests. “**My clients were requesting spaces where their loved ones could feel comfortable and would want to stay awhile,**” she says. To achieve this 5-star feel, she used a high-gloss blue paint, added custom cabinetry throughout, and made sure every amenity was within arm's reach. A custom queen bed frame placed longways against a wall takes up less room than if it protruded and can be used as a daybed with a quick swap of the pillows. Olson utilized the extra floor space to create a seating area for guests to linger.

Mattress: [Stearns & Foster](#). **Pillow fabrics:** [Fabricut](#), [S. Harris](#), and [Stroheim](#). **Lighting:** [Circa Lighting](#). **Bed upholstery** and **cording:** [Fabricut](#) and [Vervain](#). **Paint:** [Selvedge](#), [Farrow & Ball](#). **Wallcoverings** (bookcase backs, lounge ceiling, bathroom walls): [Phillip Jeffries](#). **Bedding:** [Serena & Lily](#).

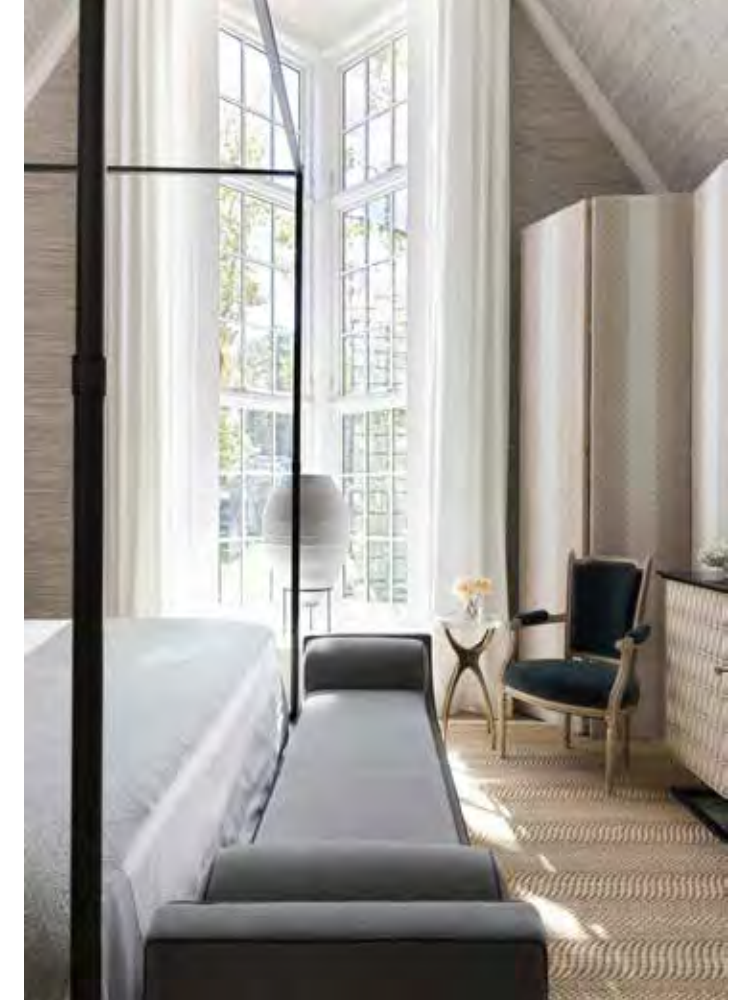
CATHEDRAL ROOM

—
by BRYNN OLSON
DESIGN GROUP

Waking up to an idyllic outdoor view—there may be nothing more relaxing. And this petite guest room features a bay window that’s nearly 14 feet tall. “As you approach the room, it feels like a breath of fresh air.... **These soaring ceilings give you that sense of awe as you walk in,**” designer Brynn Olson says. To capture that calming effect, she kept the room light and neutral, using a handcrafted grasscloth wallcovering all the way up to the ceiling and simple white drapery panels to frame the window. A four-poster bed, complete with crisp white bedding that has a smart gray border around it, feels fully tailored. Minimalist canopy panels, easily removed for cleaning, are edged with a jute and linen tape. It’s an ideal spot to rest after a long journey—and an even better place to welcome in the morning.

Mattress: [Stearns & Foster](#). **Wallcovering:** [Phillip Jeffries](#). **Lighting:** [Circa Lighting](#). **Bedding:** [Serena & Lily](#). **Fabric canopy:** [Stroheim](#) and [Fabricut](#). **Nightstands:** [Bernhardt](#).

TOP RIGHT: TOMAS ESPINOZA



^ NATURAL LIGHT

Called an oriel window, this bay window sits up off the ground. It’s a striking effect indoors and out, giving the whole room a touch of grandeur.

Windows: [Pella](#). **Rug:** [Fibreworks](#). **Drapery:** [Stroheim](#). **Bench:** [Urban Craft](#), in [S. Harris](#) fabric. **Folding screen:** [Urban Craft](#), in [Stroheim](#) fabric.



< GUEST BATH

With the walls covered in a showstopping and easy-clean [Florim porcelain tile](#), this little en suite feels as sublime as the bedroom.

Towels: [Serena & Lily](#). **Countertops:** [Caesarstone](#). **Lighting:** [Circa Lighting](#).



INTROVERT'S ESCAPE

by DUVÄL DESIGN

In a house this size, you can dream a little—and that's exactly what designer DuVäl Reynolds did when approaching this 300-square-foot private lounge. "I wanted it to feel transported, a place to get away that still feels familiar," Reynolds says. Meant for reading, resting, and imagining, the space features whimsical wallcoverings (spot serpents and tigers among the clouds) and a generous window niche with a daybed. The moody color scheme combines plush cabernet tones and forest green velvets for an enchanting environment you'll never want to leave.

Cabinet inserts: Architectural Grille. **Lighting:** Circa Lighting. **Upholstery:** Lee Industries. **Wallcovering:** Moooi by Arte. **Rugs:** Fibreworks (underneath) and Loloï (on top). **Paint:** Hopper Head (trim) and Studio Green (walls), Farrow & Ball. **Hardware:** Rocky Mountain Hardware. **Pillow fabrics:** S. Harris. **Accent tables and throw:** Frontgate.



READING CORNER

"I like to create moods, and lighting is the most important factor," Reynolds says. "You don't have to move furniture; just flick a switch."

CLOSET

Under the same Moooi wallcovering, here in blush, is an outdoor Lee Industries swivel chair in velvet from S. Harris. Paint: Sulking Room Pink, Farrow & Ball.





^ BEDROOM

With its 15-foot-tall ceilings and beautiful light, the room called for serene furnishings. As with the daybeds in the adjoining room, Ford floated the bed from the wall to impart an undeniable openness. **“It’s weird, but it works,”** she says. **“The space feels like you have room to breathe.”**

v CLOFFICE

“I always find little nooks for reading or creating,” Ford says. An unused closet situated just off the bedroom is now a makeshift homework station and creativity zone, thanks to a textured memory board and a comfy desk chair.

TEEN SUITE

by LEANNE FORD INTERIORS

A place for expression—that’s what Leanne Ford had in mind when scheming this flexible bedroom and connected chill-out space for a very lucky teenager. The warm palette of tonal neutrals, including layered **furnishings** and **accessories** from her line at [Crate & Barrel](#), makes vaulted rooms feel limitless. Ford called on her friend Carolyn Kelly, a mural artist, to create a playful ribbonlike trim along the ceiling. This is to be enjoyed by anyone lounging on the slipcovered daybeds that float in the middle of the room (easily laundered after sleepovers and messy art projects alike). **“For me, the challenge was: How do I infuse soul into a new space?”** says Ford, who typically renovates old homes but pivoted to warm up this extension to the house. A fan of the imperfect, she pinned pages torn from magazines on the walls and layered comfy bedding and pillows throughout, as if granting the future inhabitant permission to mess up things a bit. And why not, the designer says? **“The parents don’t live here.”**

Lighting: [Circa Lighting](#). **Paint:** Stirabout, [Farrow & Ball](#). **Mattress:** [Stearns & Foster](#).





^ WINDOW SEAT

One of the unifying elements in this hangout space is the graphic pattern on the [S. Harris draperies](#): It's also on throw pillows but is most dramatically interpreted in the [metal archway](#) from [Architectural Grille](#) over the bar. [Chairs](#): [Lee Industries](#).

MEDIA ROOM

by KIMBERLY + CAMERON INTERIORS

The ideal media room actually brings family together. “It should be a space where they can congregate, escape, chill, hang out, have fun, play games, and interact with each other... and have a drink or six,” jokes designer Keia McSwain. Her scheme for this long, narrow space started with a poster from her father’s favorite movie, *Across 110th Street*, that pairs deep greens and orange and hangs opposite a wall of windows. Unwilling to compromise coolness, McSwain wrapped the entire space in a luxe, stitched-hide chevron [wallcovering](#) from [Arte](#) and added a tortoiseshell gold glass pedestal table (for perching one’s drink) at the room’s entrance. “The overall vibe,” she says, “is about warmth and fellowship.”

Backsplash: [Ann Sacks](#). **Stools:** [Frontgate](#). **Lighting:** [Circa Lighting](#). **Sink and fixtures:** [Elkay](#). **Barware:** [Crate & Barrel](#). **Countertop and cabinetry:** [Grothouse](#). **Windows:** [Pella](#). **Paint:** [Bancha](#), [Farrow & Ball](#). **Table:** [Bradley](#). **Art:** Kara Schlabaugh (left) and Ivesta Angelova (right), [Minted](#).



^ **SCREENING AREA**
A massive 136" [LG Home Cinema](#) takes up a whole wall and even works in full sun. The acoustics are enhanced by a snakeskin-pattern wall-to-wall [carpet](#) from [Fibreworks](#).

< **WET BAR**
Adult and kid beverages can be stored separately in convertible undercounter [refrigerator drawers](#) from [Signature Kitchen Suite](#). A hidden smaller drawer on top is perfect for stashing away treats.



CABANA

At the far end of the pool, bright yellow umbrellas over four teak chaises welcome guests to stay awhile. Chic black-and-white outdoor-fabric cushions dry in a snap after a day of splashing and lounging.

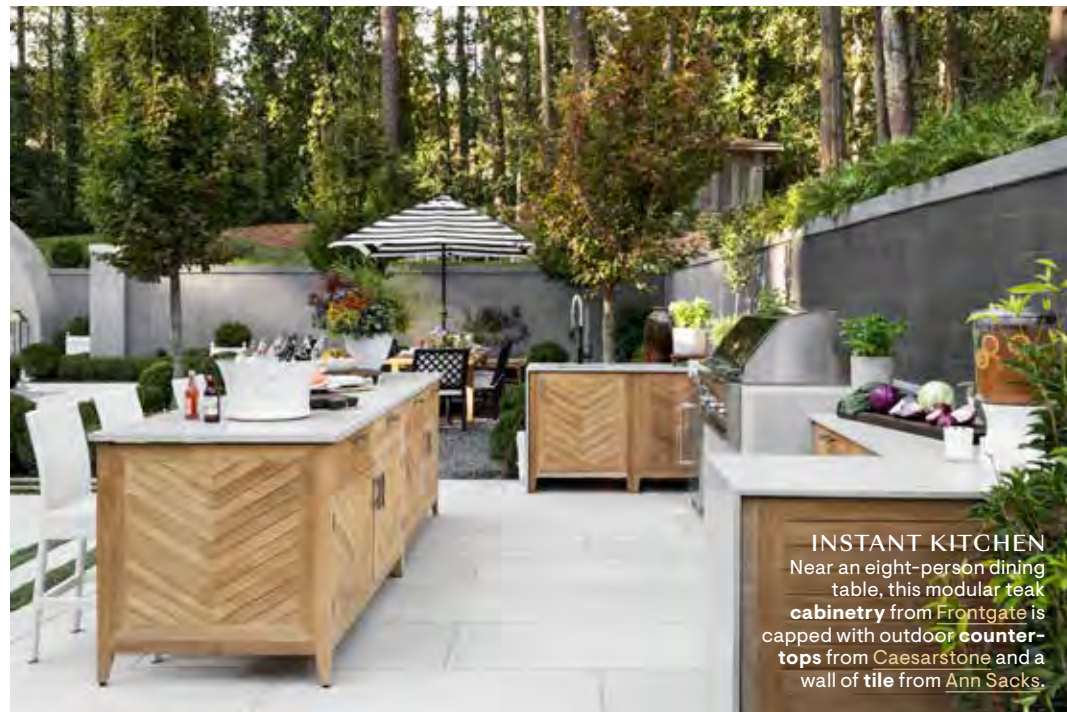


OUTDOOR RETREAT

—
by
ASHLEY GILBREATH
INTERIOR DESIGN

Five thousand square feet of backyard space is a lot to sculpt into a backyard resort, so designer Ashley Gilbreath headed straight to [Frontgate](#). “I wanted to create multiple conversation areas that could work for intimate nights at home or larger gatherings,” the designer explains. Under a covered porch, slipcovered swivel chairs paired with a sofa and a corrugated Stonecast coffee table take cues from the indoors, while a round outdoor table is the perfect place to dine on rainy days. Steps from the pool, an outdoor buffet is equipped with a nine-gallon beverage tub and plenty of space for barware and drinks.

Lighting: [Circa Lighting](#). **Paint:** Purbeck Stone (walls) and Mole’s Breath (trim), [Farrow & Ball](#).



INSTANT KITCHEN

Near an eight-person dining table, this modular teak cabinetry from [Frontgate](#) is capped with outdoor counter-tops from [Caesarstone](#) and a wall of tile from [Ann Sacks](#).

THERE’S SO MUCH MORE!
See this renovation come to life through exclusive videos, bonus photography, and shoppable stories online.





IN THE DETAILS

All the little things that make this house tick.



^ SOUND SLEEP

Every bedroom is outfitted with a [Stearns & Foster mattress](#), so both the owners and their guests will get a great night's rest.



< PERFECT TEMP

With this whole home **comfort system** from [Trane](#), homeowners can customize the air quality, temperature, and humidity by room. So wherever they are, they're completely at ease.



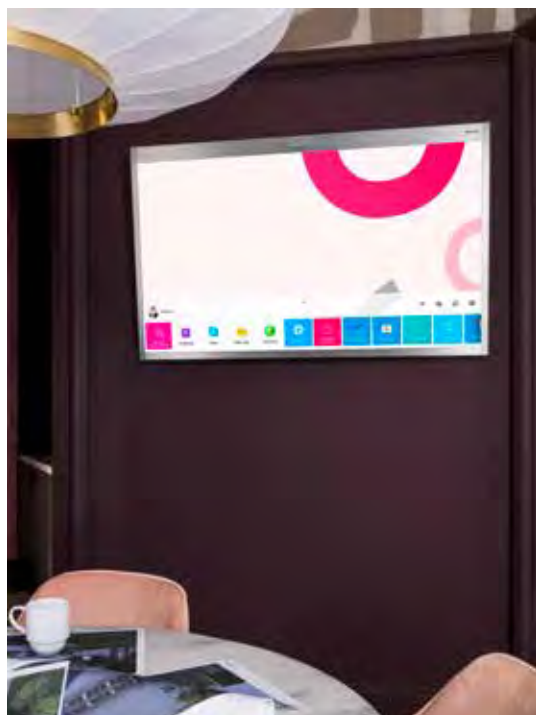
< GALLERY HALL

A corridor designed by Jonathan Savage on the upstairs landing was transformed into a gallery. **Art:** Cait Courneya (two on left) and Krissy Bengtson (right), [Minted](#).



^ EASY ENTRY

This interior **lever door handle** from [Schlage](#) complements the transitional style of the house.



^ CONFERENCE CENTER

In the home's meeting room, an [LG Quick Works screen](#) is a smart board, allowing for easy videoconferencing, split-view multitasking, and voice recording.

PING-PONG TABLE & CURTAINED CABINET: ROBERT PETERSON. ALL OTHERS: TOMAS ESPINOZA.



Countertop: [Grothouse](#). Wallcovering: [Phillip Jeffries](#). Floating shelves: [Caesarstone](#). Hardware: [Rocky Mountain Hardware](#).

ROOMY SINK

This classic **bridge faucet** from [Elkay](#) looks elegant from every angle and pairs well with their deep, does-it-all sink.



^ HOME SECURITY

Even in a great neighborhood, security matters. The [Schlage Wi-Fi dead bolt](#) allows owners to easily manage codes and grant access.



STOCKED SHELVES

Across from the scullery, a walk-in pantry keeps **small appliances** and **kitchenware** from [Wayfair](#) within reach. Fixed lower shelves are paneled with [Caesarstone](#), while upper shelves are adjustable.



^ HARDWORKING LAUNDRY

This second-floor laundry room got a new look with garden-inspired **wallpaper** from [Sanderson](#) and an [LG Studio Styler](#) that's guaranteed to minimize runs to the dry cleaner. **Countertop:** [Caesarstone](#). **Hardware:** [Rocky Mountain Hardware](#).



< PLAY SPACE

This two-in-one **game table** from [Frontgate](#) has a removable top: Leave it on for Ping-Pong or take it off to reveal a billiard table.

SMART START

The best way to begin a renovation project? **Get expert advice up front.** The pros at [Regions Bank](#) can help you sort out your finances and plan your dream home.